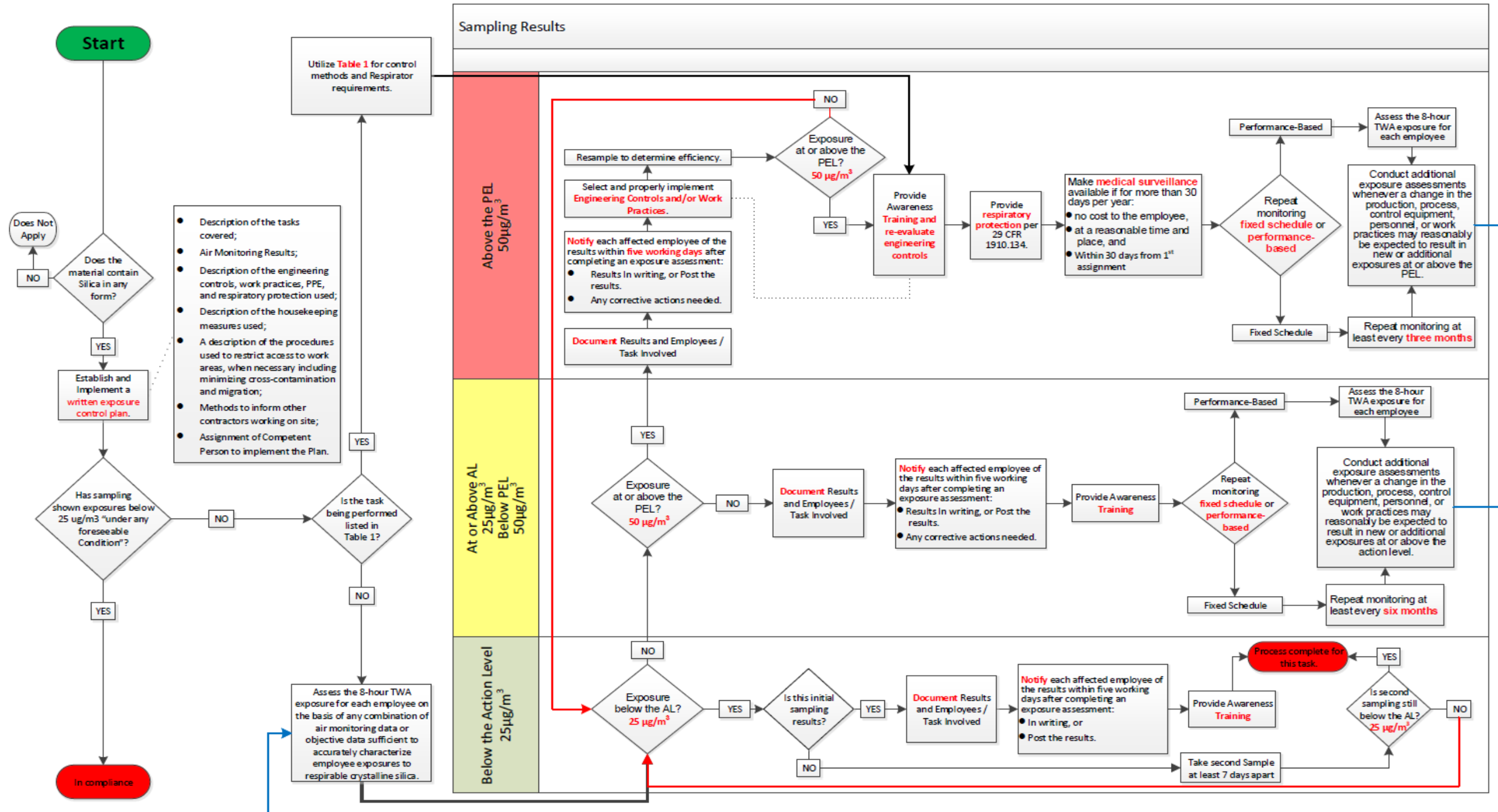


Attachment D – Respirable Crystalline Silica Standard Flow Chart

RESPIRABLE CRYSTALLINE SILICA STANDARD FLOW CHART



Key Notes to Remember:

1. If there are any changes in production, process, control equipment, personnel, or work practices that may reasonably be expected to result in new or additional exposures, reassessment is required.
2. Awareness training requirements – Employee should be able to demonstrate knowledge of Health hazards, Tasks cover at this location, Control Methods, This standard, Identity of the site Competent Person, Purpose and description of the medical surveillance program.
3. Do not allow dry sweeping or dry brushing where such activity could contribute to employee exposure to respirable crystalline silica unless wet sweeping, HEPA-filtered vacuuming or other methods that minimize the likelihood of exposure are not feasible.
4. Do not allow compressed air to be used to clean clothing or surfaces where such activity could contribute to employee exposure to respirable crystalline silica unless the compressed air is used in conjunction with a ventilation system that effectively captures the dust cloud created by the compressed air or **No alternative method is feasible.**